

NorthwesternTM
OKLAHOMA STATE UNIVERSITY

IMPACT



Spring 2025



FACULTY



A Message From the Department

On behalf of the Department of Social Work, we welcome you to the Northwestern Oklahoma State University's Social Work Program newsletter. This newsletter is updated bi-yearly and includes the most recent news from the department of social work throughout all of our campuses. Here you will see our most recent projects, upcoming events, student spotlights and more! We would like to thank those whose efforts assist us in preparing competent, effective Northwest Oklahoma generalist practice social workers. We are so grateful to our field agency partners, field instructors, adjunct instructors, and Social Work Advisory Board Members for enhancing and improving social services in our region. We look forward to all the new developments in the department and are excited to see the benefits these developments bring to our social work students.



DR. KYLENE REHDER, LCSW
Professor of Social Work
Social Work Program Director
Jesse Dunn 308 Alva Campus
(580) 327-8135
kdrehder@nwosu.edu



Compassion in Action - Ride Rangers Ride

DeSERVING Award Recipient

Krystan Pierce



"I am truly honored to receive the deSERVING Ranger award," Pierce said. "When I first heard I was not only nominated but winning this award, it brought tears to my eyes. I've always enjoyed helping others in any way I possibly could, so to be honored for doing something I love is incredibly humbling and inspiring to continue to make a difference where I can."

The deSERVING Ranger Award is awarded once a year to a qualified Northwestern student, who is nominated by a Northwestern faculty or staff member. The award started in 2015 and has been awarded to students from a variety of majors.

Spring Showcase



The Department of Social Work was proud to participate in the Spring 2025 Showcase.

16 Northwestern Social Work Seniors Enter Practicum Assignments

Sixteen Northwestern Oklahoma State University senior social work majors entered their field practicum assignments at agencies throughout Oklahoma and Kansas this spring semester.

Students must complete 420 contact hours, demonstrate 20 behaviors and master the program's nine core competencies as outlined by the Council on Social Work Education (CSWE). Field Education is a signature pedagogy for social work that instructs and socializes students to the fundamental dimensions of professional practice.

During field education, students are able to immerse themselves in practice and apply the skills and knowledge they have attained.

"Each student in field education is assigned a volunteer field instructor who dedicates their time to guiding student learning and reinforcing essential social work concepts, behaviors, and competencies," said Codi Harding, director of field experience and assistant professor of social work. "We are grateful for all of our past and present field instructors."

Listed below are the students currently in their field practicums, hometowns, and their practicum agency placements:

Harlie Altland
of Vici at the Department of Human Services in Woodward

Hunter McMillin
of Sylvia, Kansas, at Alva Public Schools

Alyssa Arambula
of Enid at the Department of Human Services in Enid

Krystan Pierce
of Fargo at Western Plains Youth and Family Services in Woodward



Alyssa Ball
of Woodward at Western Plains Youth and Family Services in Woodward

McKenzie Cramer
of Ashland, Kansas, at Ashland Public Schools



Cammi Rogge
of Alva at the Department of Human Services in Enid

Malori Shire
of Enid at Great Salt Plains Health Center in Enid

Samuel Felton
of Enid at
Northwest
Behavioral Health
Center



Samuel Felton

Baeleigh Henshall
of Enid at the
Department of
Human Services in
Enid



Baeleigh Henshall

Makenzie Hoskins
of Arnett at Youth
and Family Services
in Enid



Makenzie Hoskins

Kyra Hussey
of Mangum at the
Department of
Human Services in
Mangum



Kyra Hussey

Tori Tyler
of Alva at the
Department of
Human
Services in Alva



Tori Tyler

Mikaela Tew
of Woodward at
Circle of Care in
Woodward



Mikaela Tew

Yasmin Vargas
of Enid at
YWCA Enid



Yasmin Vargas

Summer Verrill
of Norman at the
Department of
Human Services
in Alva



Summer Verrill

SWAT's Dignity Drive Collects Personal Hygiene Products

The most recent "Compassion in Action" Dignity Drive sponsored by the students in the Social Workers Association of Tomorrow (SWAT) chapter at Northwestern Oklahoma State University successfully gathered several personal hygiene products for the Northwest Center for Behavioral Health in Woodward.

Pictured on the left:

Krystan Pierce
Nicole Posada
Alyssa Ball



Pictured on the right:

Executive director of the Northwest Center for Behavioral Health (NCBH); Autumn Nickelson & Morgan Sanders

SWAT, a student-run organization led by director of social work field education and assistant professor of social work Codi Harding, seeks to enhance the social work learning experience. One of SWAT's purposes is to employ community service projects while supporting community partners and their consumers. The dignity drive is one of the community service projects SWAT students host to give back to the community.

"Each year, this event gives SWAT members the opportunity to help meet the basic needs of individuals in their local and surrounding communities," Harding said.

Donations to the center included toothbrushes, toothpaste, body wash, shampoo and conditioner, deodorant, detergent, feminine hygiene products and more.

Primp for Prom

SOCIAL WORK
DEPARTMENT

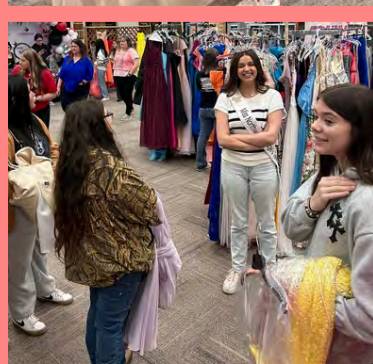


The Northwestern Oklahoma State University Department of Social Work gave away more than 350 dresses to students representing 30 high schools from Oklahoma, Kansas and Texas at the 11th Annual Primp for Prom event at Woodward High School. This year more than 500 dresses and 50 pairs of shoes were donated to the Northwestern Social Work Department that co-sponsors the event with Woodward High School.

Dr. Kylene Rehder, chair of the Northwestern Department of Social Work, social work program director and professor of social work, expressed appreciation for those who helped with this event's success.

"Please understand this event is about more than dresses," Rehder said. "We see it as a means to embody our university and professional commitment to serve. This community event provides financial support to families, builds a sense of community, celebrates inclusion, models service, and promotes positive self-images, confidence and empowerment to young people."





Northwestern Oklahoma State University's Department of Social Work helped celebrate Social Work Month this March with the theme "Social Work: Compassion + Action."

The annual Social Work Month campaign is a time to inform the public, policymakers, and legislators about the profession of social work. The social work profession is one of the fastest-growing in the United States, with projections indicating that more than 800,000 people will be employed as social workers by 2033. These professionals are not only key in delivering essential mental health services, but are also advocating for initiatives such as the Social Work Interstate Licensing Compact to enhance mental health care delivery nationwide.

"Social work is a profession that empowers individuals, strengthens families, and transforms communities," Dr. Rehder said. "As we celebrate the profession of social work, we recognize the incredible impact social workers have in improving lives, advocating for social justice, and providing vital support to those in need."



SWAT Raises Awareness for Sexual Assault Awareness Month



The NWOSU Psychology Club and Social Workers Association of Tomorrow (SWAT) have partnered to raise awareness about sexual assault in recognition of Sexual Assault Awareness Month this April.

Students created window paintings around campus and set up resource tables and a support wall in the Student Center from April 1-11. These efforts aim to highlight the importance of prevention, support services, and awareness.

According to the National Sexual Violence Resource Center, *one in five women* and *one in 16 men* experience sexual assault while in college. Raising awareness is essential in fostering a culture that supports survivors, promotes consent education, and encourages bystander intervention.

LEAD.

Legislative Education & Advocacy Day



LEAD provides an opportunity for social work students and professionals to gather to learn about the legislative process and advocate for key issues by engaging with lawmakers and their staff. The day was filled with talks from several senators and representatives, a visit with Lt. Governor Matt Pinnell and concluded with a dome tour arranged by Rep. Carl Newton.

“Legislative Education & Advocacy Day provides an opportunity for participation in public policy issues and social justice advocacy, both key components of social work education and practice,” said Dr. Kylene Rehder, professor of social work and chair of the department of social work.

“Social workers are the bridges that connect people with resources to thrive and foster systemic change.”



NWOSU Social Work & HARUV USA



Free Infant Mental Health Training Provided to over 100 Participants



HARUV USA
at OU - Tulsa

 **HARUV USA**
at OU - Tulsa  **Northwestern**
OKLAHOMA STATE UNIVERSITY



Haruv USA & NWOSU present:

A Two-part Virtual Infant Mental Health Series

March 24, 2025, 1-4pm CDT
Attachment Style and its Influence on Children with Lucy Shirisia, PhD

April 30, 2025, 1-4pm CDT
Foundations of Infant Mental Health: Assessment, Diagnosis, and Treatment in Practice with Tara Glenn, LCSW, IMH-E*

Free CEUs available
(3 credit hours for each session)

Lucy Shirisia Tara Glenn



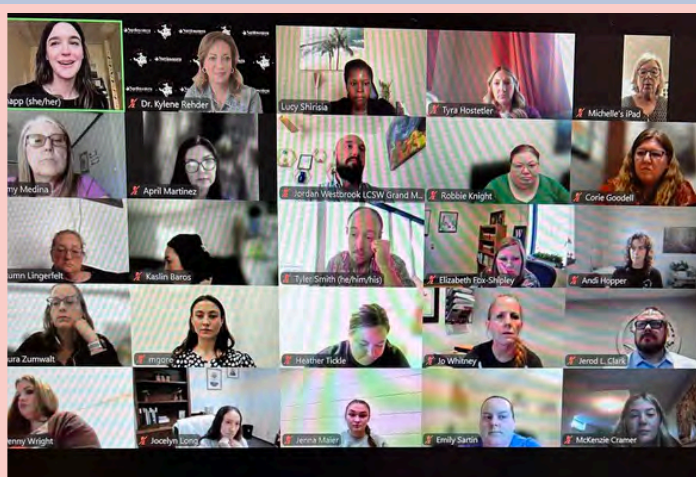
Attachment Theory and Healing Techniques

Lucy Shirisia



AREAS OF ASSESSMENT

- Behaviors
- Emotions
- Development
- Family History
- Psychosocial stressors
- Relationships
- Caregiver history

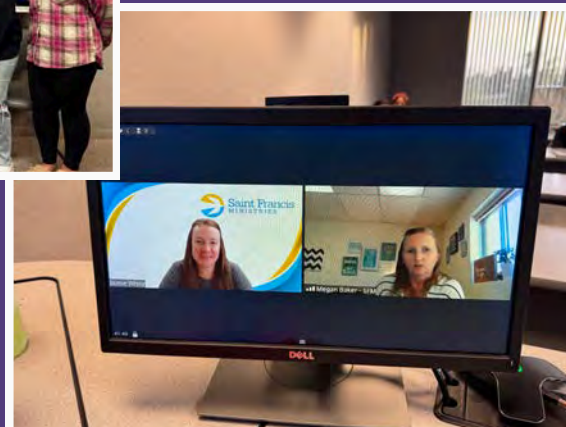


GUEST SPEAKERS



Sharon Robinett-Morris, LPC-S, ATR, Assistant Clinical Director at Youth and Family Services, North Central Oklahoma, sharing valuable insights on the use of Art Therapy to support clients who have experienced abuse and/or neglect.

Social work students hearing how to get their license to practice after graduation from Jim Marks, Executive Director of the Oklahoma State Board of Licensed Social Workers.



Jaimie White, Human Resources Specialist, and Megan Baker, LBSW and Area Director for Colby, Garden City, and Liberal, spoke to the Child Abuse and Neglect class about the services and programs offered by Saint Francis Ministries.

Faculty Professional Conferences

The Association of Baccalaureate Social Work Program Directors



Professor Harding attending the BPD conference with Dr. Anthony Estreet, NASW CEO & BPD President, Dr. Catherine Gayle.

National Technology & Social Sciences Conference

Dr. Rehder with Benita Bruster, Co-Director of the National Social Science Association, learning innovative techniques.



Student Activities



Take Me Out to
The Ball Game!

Baseball, hot dogs, &
apple pie event at the
David Allen Memorial
Ballpark in Enid



NWOSU Carnival

S.W.A.T. hosted a
booth featuring a
cornhole game.

Samuel Felton,
Isabella Burden,
Harlie Altland, and
Krystan Pierce





CONGRATULATIONS

Bachelor's of Social Work Class of 2025!



Your dedication and hard work have led you to this significant milestone. As you step into the professional field of social work, remember the profound impact you can make in the lives of individuals and communities.

Best wishes as you embark on this rewarding journey!



CARE Campus

Students in the Child Abuse and Neglect class participated in an in-person and virtual tour of The CARE Campus and the Fourth Judicial District CASA Program in Oklahoma, where they learned about the broad range of services provided.

Pictured Maureen Torres, Mona Henos, Lorina Jibas, Anna Lara, Haylee Sellers, James Fanning, Lizbeth Lopez, Emey Lopez, and Professor Codi Harding



SWAT Wooden Children Project

In honor of National Child Abuse Prevention Month, the Northwestern Oklahoma State University Social Workers Association of Tomorrow (SWAT) proudly participated in the Wooden Children Project, an annual awareness initiative organized by The CARE Campus and Fourth Judicial District CASA Program of Oklahoma.

Throughout the month of April, handcrafted wooden child figures—each symbolizing a confirmed case of child abuse or neglect—are displayed on the Garfield County Courthouse lawn in Enid.



NWOSU Outstanding Senior

Krystan Pierce



**Congratulations to Krystan Pierce, who was named a
2025 NWOSU Outstanding Senior
during the annual Northwestern Foundation and Alumni Reunion**



GRADUATION



**Bachelor's of Social Work
Class of 2025!**





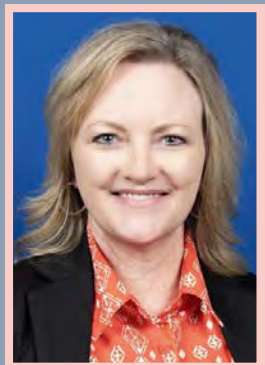
Kevin Evans,
Executive
Director

Western Plains Youth
and Family Services

Board Members

The Social Work Program Advisory Board is comprised of social workers, practitioners, and leaders in our local communities that foster and support the continued development of social work education in the region. While members come from different communities, the committee is seen as one functional unit and focuses on the overall development of the program. The primary purpose of the board is to maintain active communication between the social work practice community and the program to ensure continued improvement.

The Social Work Program Advisory Board addresses the following: student preparation to meet community and agency needs, expectations for students in field education, program assessment outcomes, input on educational policies, student recruitment and retention, job placement, research initiatives, and identifying agency needs that the social work program can address to contribute to community betterment.



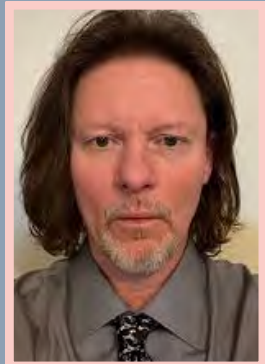
Amy Whitson,
MSW, Child
Welfare Deputy
Director

Region I, Oklahoma
Department of Human
Services



Kailie Martin,
BSW, MSW
Outpatient
Therapist

Western Plains Youth
and Family Services



James Marks,
MSW, LCSW
Executive Director

Oklahoma State Board
of Licensed Social
Workers



Krystan Pierce,
BSW Student
SWAT: Student
Organization
President

Northwestern
Oklahoma State
University



Raquel Razien,
BSW, MSW,
Woodward
CarePortal Community
Coordinator