



FALL 2021

IMPACT

Serving generations, changing the world.



Northwestern

OKLAHOMA STATE UNIVERSITY
DEPARTMENT OF SOCIAL WORK



Faculty



A Message From the Department

On behalf of the Department of Social Work, we welcome you to the Northwestern Oklahoma State University's Social Work Program newsletter. This newsletter is updated biyearly and includes the most recent news from the department of social work throughout all of our campuses. Here you will see our most recent projects, upcoming events, student spotlights and more!

We would like to thank those whose efforts assist us in preparing competent, effective Northwest Oklahoma generalist practice social workers. We are so grateful to our field agency partners, field instructors, adjunct instructors, and Social Work Advisory Board Members for enhancing and improving social services in our region. We look forward to all the new developments in the department and are excited to see the benefits these developments bring to our social work students.

The Time is Right for Social Work – Ride, Rangers, Ride!

DR. KYLENE REHDER, LCSW

Professor of Social Work
Social Work Program Director
Jesse Dunn 308 Alva Campus
(580) 327-8135
kdrehder@nwosu.edu

Codi Harding- New Faculty



I am honored to introduce myself as the new Director of Social Work Field Education at Northwestern Oklahoma State University. I earned my Bachelors of Social Work and Bachelors of Science in Psychology from Northwestern Oklahoma State University and hold a Masters of Social Work from the University of Oklahoma. My practice experience is behavioral health in surrounding rural elementary schools. My professional social work experience provides me a realistic framework in assisting students in applying social work knowledge, values, and skills into practice. I am excited about working with agencies to strengthening our field experience partnerships in our goal to develop ethical and effective social work practitioners.

Kailie Martin- Student Spotlight

When I first came to Northwestern, I thought I knew the career path I wanted to follow. I was determined on this path until I learned what social work was and the impact social workers have on society as a whole. Social work is all about empowerment, encouragement and social justice. I always knew I wanted to be in a helping profession, so when I learned more about this program I knew it was the one for me. I have enjoy all the classes, and the faculty and staff of the social work program are nothing less than the best. I am extremely excited about the opportunities in this profession and grateful to be a part of the NWOSU Social Work program.



Don't forget to
"Like"
our Facebook page!

@nwosusocialwork



The image shows a screenshot of a Facebook profile page for the NWOSU Department of Social Work. The profile picture is a circular logo with the text "Northwestern OKLAHOMA STATE UNIVERSITY DEPARTMENT OF SOCIAL WORK". The cover photo features a grey background with several fingerprints in red and black, and the text "We're All Human" in red, followed by "DEFEAT ADVERSITY CELEBRATE DIVERSITY ENCOURAGE EMPOWERMENT" in black. The profile name is "NWOSU Department of Social Work" and the handle is "@nwosusocialwork · College & University". There is a blue "Send Message" button with a speech bubble icon. Below the button, it says "Hi! Please let us know how we can help." At the bottom, there are navigation tabs for "Home", "About", "Photos", "Videos", and "More", along with a "Liked" button, a search icon, and a menu icon.

Northwestern
OKLAHOMA STATE UNIVERSITY
DEPARTMENT OF SOCIAL WORK

NWOSU Department of Social Work
@nwosusocialwork · College & University

Send Message

Hi! Please let us know how we can help.

Home About Photos Videos More

Liked

Special Guests Welcomed this Fall

The social work program is always thrilled to welcome special guest lecturers to campus. Thank you to the following for presenting to social work courses:

Linda Smith, MSW, from the University of Oklahoma's Anne & Henry Zarrow School of Social Work Child Welfare Professional Enhancement Program (CWPEP).

Charlotte Kendrick, MSW, Graduate Coordinator from The University of Oklahoma's Anne and Henry Zarrow School of Social Work.

Steven Pharris, MSW, JD, LCSW, Executive Director of the Oklahoma Chapter of the National Association of Social Workers (NASW)



Linda Smith

Linda Smith, MSW, from the University of Oklahoma's Anne & Henry Zarrow School of Social Work Child Welfare Professional Enhancement Program (CWPEP) visited with students about the opportunity to serve in the area of Oklahoma public child welfare. CWPEP is a Title IV-E partnership between the University of Oklahoma, The Oklahoma Department of Human Services, and the U.S. Department of Health and Human Services Administration for Children and Families. The Anne and Henry Zarrow School of Social Work coordinates the contract with Northwestern and other participating accredited undergraduate social work programs including East Central University and Oral Roberts University.



Charlotte Kendrick

Charlotte Kendrick, MSW, Graduate Coordinator from The University of Oklahoma's Anne and Henry Zarrow School of Social Work.

Charlotte Kendrick has over 17 years of social work experience in child welfare, medical casework with program and management experience as well. She began her social work career as a child welfare worker with Child Welfare Services at the Oklahoma Department of Human Services (DHS), leaving for a time to work as a medical social worker and then manager of Social Services at OU Medical Center. She returned to DHS as Program Administrator of Prevention Services for Child Welfare Services. Ms. Kendrick teaches LMSW and LCSW Exam Preparation classes for the School of Social work and became a Community Faculty member in 2017.



Steven W. Pharris

Steven W. Pharris, MSW, JD, LCSW, Executive Director of the Oklahoma Chapter of the National Association of Social Workers (NASW), visited with beginning social work students about the profession. NASW is the largest membership organization of professional social workers in the world and focuses on enhancing the professional growth and development of its members, creating and maintaining professional standards, and advancing sound social policies.





Social work seniors participating in a NWSU social work program recruitment video. A special thank you to Kailie Martin, Lizzy Dennett, Brianna Wisby and Rachel Beaver for their participation. Ride Rangers Ride!



The social work program was honored to be highlighted at the Woodward Chamber of Commerce Luncheon this Fall. Dr. Rehder was able to spotlight the program's success and its community involvement while Kevin Evans, advisory board member and executive director of Western Plains Youth and Family Services, addressed the importance of social work graduates at his agency.

Bridge BBQ

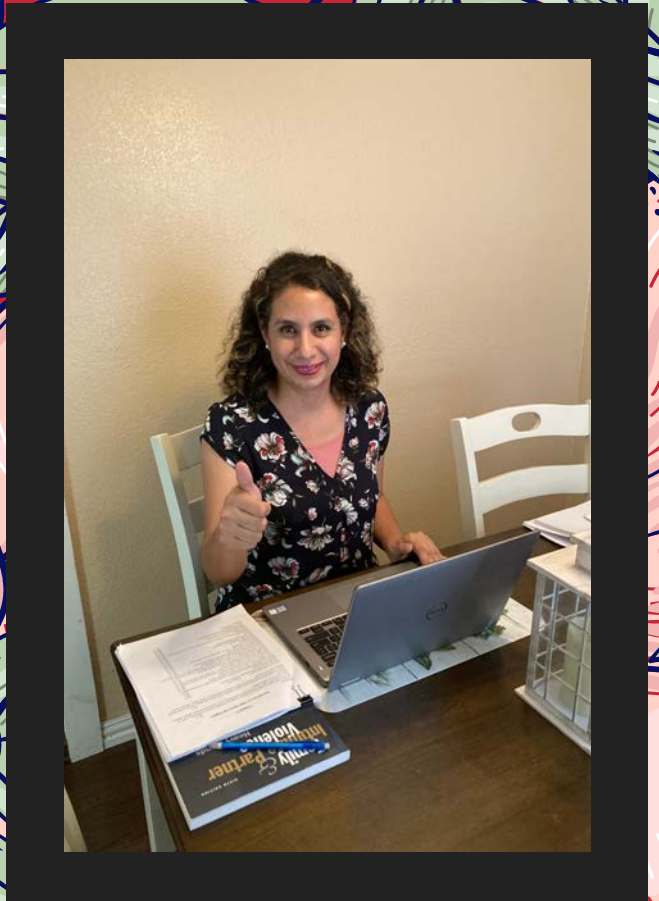
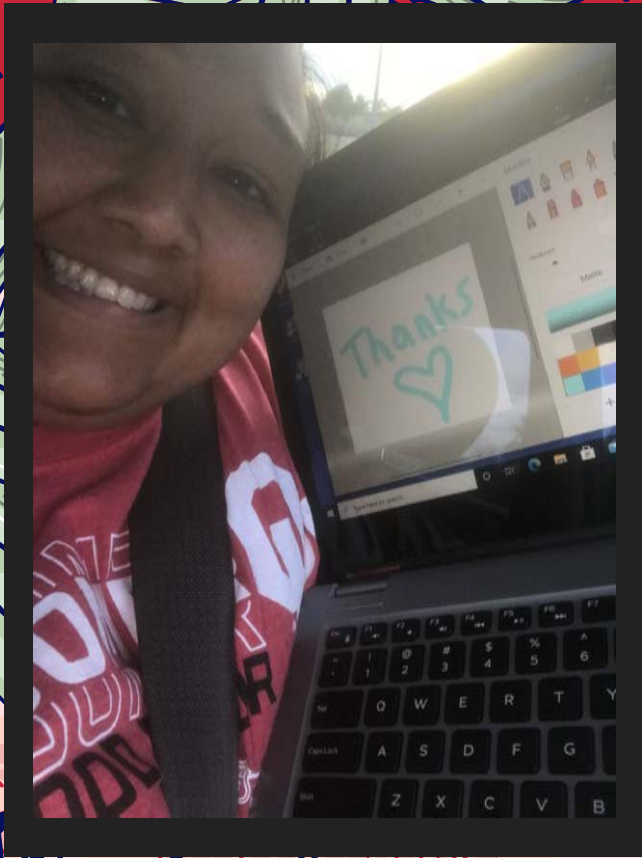
Northern Oklahoma College and Northwestern Oklahoma State University hosted a Bridge BBQ on September 15, 2021, at Northern Oklahoma College's Enid campus. The goal of the Bridge BBQ is to inform students graduating from NOC about the opportunity to attend NWOSU with a one-time scholarship based on their cumulative grade point average.





SWAT members, Julie Mayer and Barbara McPherson, help pass out treat bags for the Trunk or Treat hosted by Fowler Early Childhood Center in Enid.





The Department of Social Work now offers laptops that convert to tablets for students as part of the Active Learning Environments grant provided by the CWPEP Payback Grant.

Child Welfare Professional Enhancement Program Stipend Awarded to Three Social Work Majors



Northwestern Oklahoma State University's Department of Social Work announces Northwestern-Alva senior Rachel Beaver of Longdale, Northwestern-Woodward junior Amy Ireland of Seiling and Northwestern-Enid senior Perla Fonseca Torres of Enid are the stipend recipients of the Child Welfare Professional Enhancement Program (CWPEP) for the 2021-2022 academic year.

CWPEP provides funds for students who plan careers in child welfare services in Oklahoma. The stipends are awarded to full-time students majoring in social work and provide money toward educational expenses to participating students. Students who receive the stipends complete educational internships in child welfare agencies within the Oklahoma Department of Human Services (OKDHS). Upon graduation, students are assured employment in the participating DHS programs.





"I chose to pursue a career in social work to be able to make a difference in people's lives," Ireland said. "I am honored to receive the CWPEP award and use my education to positively impact others."

Amy Ireland

"I am honored to have been accepted into the CWPEP," Torres said. "This program has secured me employment in a child welfare position with the Oklahoma Department of Human Services and with an opportunity to serve children and families in this state."

Perla Fonseca Torres



"Being accepted into CWPEP is a dream for me. In the beginning, it is hard to imagine all the incredible opportunities available to you in the social work program, but they are life-changing. I'm excited for my professional social work future and the opportunity to serve Oklahoma children and families."

Rachel Beaver



6th Annual Compassion in Action Dignity Drive

“SWAT has participated in the Dignity Drive for the past few years,” Barbara McPherson, social work senior and SWAT president for the Enid campus, said. “The Dignity Drive is one way we can give to those that are in need. I am proud to be a part of reaching our goal and helping the community.”

This year SWAT gathered donations for the YWCA located in Enid. The YWCA provides emergency crisis intervention services for victims of domestic violence and sexual assault. These services also include an emergency shelter for survivors of domestic violence.



**6TH ANNUAL
Compassion in Action
Dignity Drive**

LET'S HELP THE YWCA FILL THEIR FACILITY

Shampoo & Conditioner	●	Feminine Hygiene Products
Soap & Deodorant	●	Hair Brushes & Products
Diapers	●	Toothbrushes & Toothpaste
Lice Kits	●	Dental Floss
Baby Hygiene Products	●	New Socks, Underwear, Bras
Laundry Soap	●	Sanitizing Wipes

TAKING DONATIONS NOW THROUGH NOV. 19TH

Drop Box Locations Include:

Alva: Academic Success Center, JD308,
AND JD South Entrance

Enid: Commons & Front Entry

Woodward: Cross Over Hall

Questions? Contact SWAT Sponsor Codi Harding at clharding@nwsu.edu

SPONSORED BY SWAT

School Supply Drive



SCHOOL SUPPLY DRIVE

DONATIONS WILL BE TAKEN NOVEMBER 8 THRU NOVEMBER 19

DROP BOX LOCATIONS INCLUDE:

ALVA:
ACADEMIC SUCCESS CENTER, & JD SOUTH ENTRANCE

ENID:
COMMONS & FRONT ENTRY

WOODWARD:
CROSSOVER HALL

Sponsored by:
S.W.A.T.
Psychology Club
Enid Leadership Council



The community of Stillwater will be hosting several families from Afghanistan. Stillwater Public Schools is working with various organizations to prepare for the arrival of these families.

In an effort to be prepared, we are assembling 200 backpacks with school supplies.

The following resources are needed:

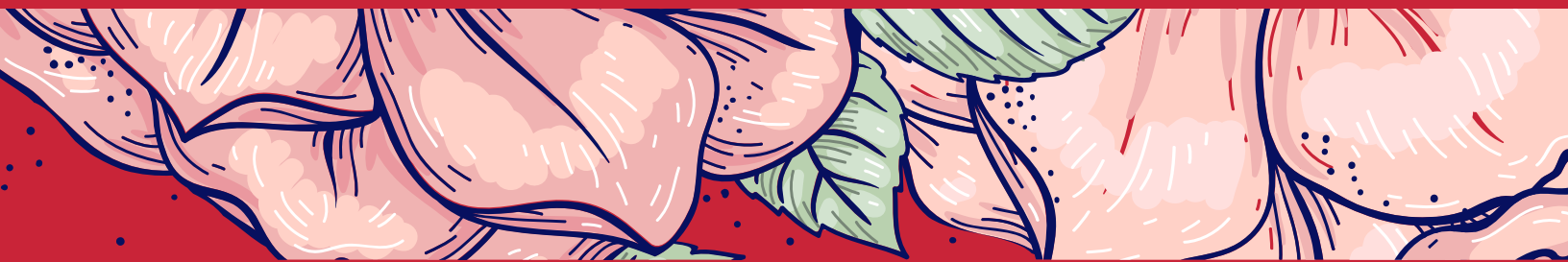
- Backpacks
- Pens
- Dice
- White Board with Expo Marker/Erasers
- Rulers
- Word to Word Dictionaries
- Simple calculator that does not do negatives
- Scissors
- Water bottles (the reusable kind)
- Spiral notebooks
- Loose leaf paper
- Composition Notebooks
- Binders
- Pencils
- Markers
- Crayons
- Colored Pencils
- Hand held pencil sharpeners
- Glue (bottle or stick)

Questions? Please contact S.W.A.T. Sponsor Codi Harding at clharding@nwsu.edu

The Social Work department was approached by Northwestern social work alumna Diana Nolan to partner with Stillwater Public Schools in her role as the district social worker.

The School Supply Drive will benefit the community of Stillwater, which will be hosting several families from Afghanistan. In preparations for the arrival of these families, 200 backpacks with school supplies are being assembled.

“This school supply drive is an opportunity to display the true Oklahoma and Northwestern spirit of caring,” Julie Mayer, Enid senior SWAT vice president, said.



DONATION EVENT

Dresses, shoes, and jewelry can be
donated at
Woodward High School at
13th and Downs Avenue in Woodward

Primp for Prom

TO DONATE IN THE [WOODWARD](#) AREA, CONTACT DR. KYLENE REHDER AT
KDREHDER@NWOSU.EDU OR STEFANIE ALEXANDER AT (580) 256-2858

TO DONATE IN [ALVA](#), PLEASE CONTACT ANDREA LAUDERDALE,
SECRETARY FOR THE DEPARTMENT OF SOCIAL WORK
AT AMLAUDERDALE@NWOSU.EDU

TO DONATE IN [ENID](#), PLEASE CONTACT CODI HARDING AT
CLHARDING@NWOSU.EDU

Primp for Prom is an annual event held in Woodward for NW Tri-State Area High School students to pick out a formal dress at no charge. Sponsored by NWOSU Department of Social Work and Woodward High School Key Club.

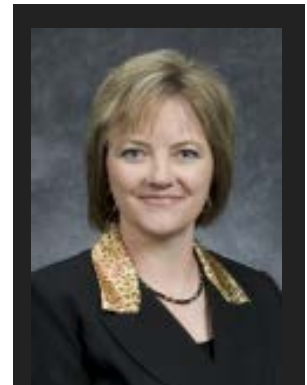
Advisory Board Members

The Social Work Program Advisory Board is comprised of social workers, practitioners, and leaders in our local communities that foster and support the continued development of social work education in the region. While members come from different communities, the committee is seen as one functional unit and focuses on the overall development of the program. The primary purpose of the board is to maintain active communication between the social work practice community and the program to ensure continued improvement.

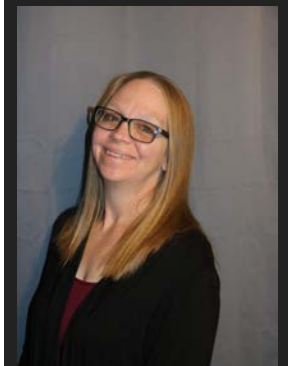
The Social Work Program Advisory Board addresses the following: student preparation to meet community and agency needs, expectations for students in field education, program assessment outcomes, input on educational policies, student recruitment and retention, job placement, research initiatives, and identifying agency needs that the social work program can address to contribute to community betterment.



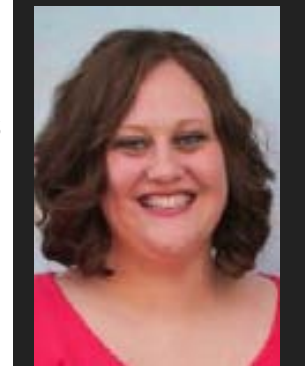
Amy Whitson, Child Welfare Deputy Director
Region I, Oklahoma Department of Human Services



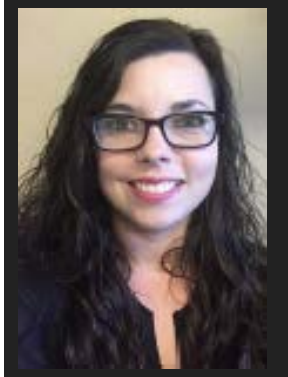
Kevin Evans, Executive Director
Western Plains Youth and Family Services



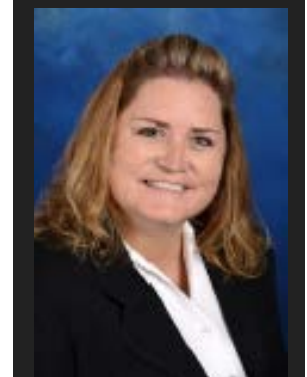
**Raquel Razien, State Director of
Community and Prevention Services**
United Methodist Circle of Care



Barbara McPherson, SWAT President
Northwestern Oklahoma State University



Tricia Mitchell, Executive Director
4RKids Foundation



**Pamela Bookout, MSW, LCSW, Integrated Health
Specialist**
Great Salt Plains Health Center, Inc.

Nancy Prigmore, MSW, JD Manager
Legal Aid Services of Oklahoma